

SEMINARIO TECNICO

TENDA FIRE E120 EW30

– INSTALLAZIONE MECCANICA



Connect the head boxes together using the head box connector bracket.



Drill Xxdia holes, using the bracket as a template

SEMINARIO TECNICO

TENDA FIRE E120 EW30 – INSTALLAZIONE MECCANICA



Pop rivet one side of the bracket to the head box only at this stage.



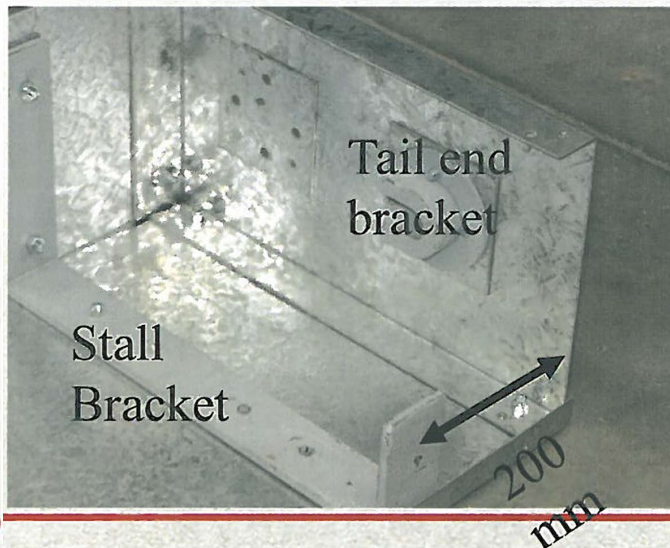
SEMINARIO TECNICO

TENDA FIRE E120 EW30 – INSTALLAZIONE MECCANICA



Stall
Bracket

Lay out the motor and tail
brackets
also the stall brackets



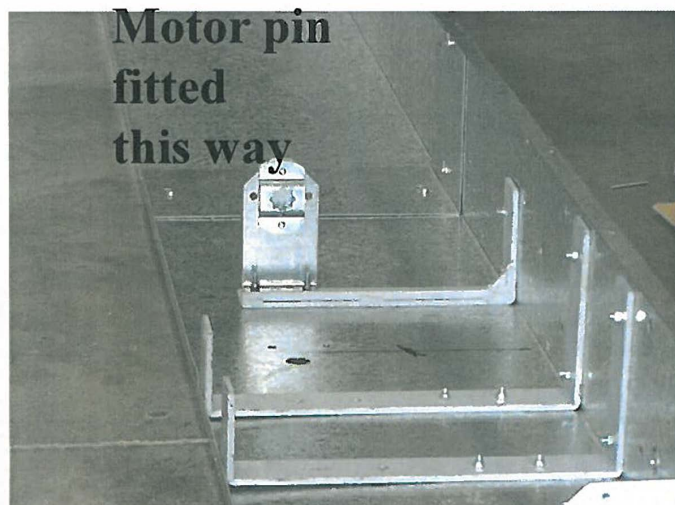
Assemble the motor and tail end
brackets as per the drawing, Fix the
stall brackets.

The stall brackets should be fixed
200mm
from the motor or tail brackets

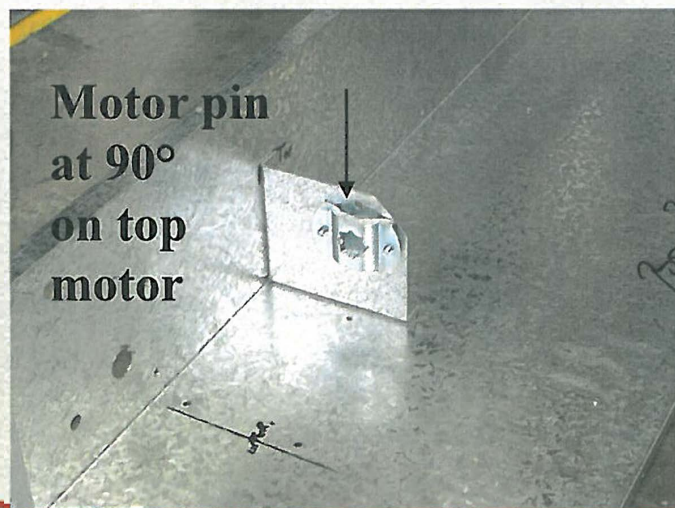
SEMINARIO TECNICO

TENDA FIRE E120 EW30

– INSTALLAZIONE MECCANICA



Motor bracket, this case an intermediate bracket, fitted with the stall bracket 200mm from it.

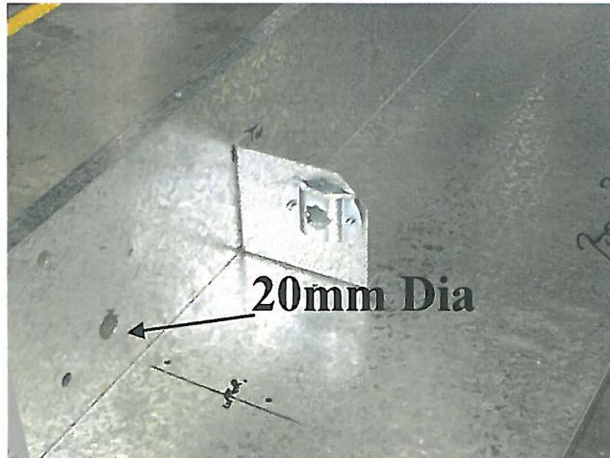


The motor bracket is fitted at 90° on the top motor. This will enable the motor / roller to be removed for maintenance

SEMINARIO TECNICO

TENDA FIRE E120 EW30

– INSTALLAZIONE MECCANICA



Drill a 20mm diameter hole for the motor cable, ensure that there are no sharp edges, which may damage the cable.



Measure the length of the roller, with tail pins retracted, check the corresponding size on your head box.

It is easier to re align any brackets whilst the head box is on the floor



SEMINARIO TECNICO

TENDA FIRE E1 20 EW30

– INSTALLAZIONE MECCANICA



Mark out the holes for the head box fixing bolts.

Normally we like to have a short section of unistrutt directly above the head box to give a means of horizontal adjustment

The first two 9 or 11mm holes are marked

150mm from the end, and 35mm from each side.

The next holes should be no more than every 1500mm



SEMINARIO TECNICO

TENDA FIRE E120 EW30

– INSTALLAZIONE MECCANICA



Lay the head box on the floor in the final fitting position.



Using a plumb bob or laser transfer the position on to the slab or over head brackets to position the hanging bracket.

– INSTALLAZIONE MECCANICA



SEMINARIO TECNICO

TENDA FIRE E120 EW30 – INSTALLAZIONE MECCANICA



The head box can now be lifted up to the over head supports. Start at one end.

Slide the unistrutt nuts into the unistrutt, only tighten these bolts finger tight at this stage.



Hang the next section of head box.
You may have to connect the first two sections together on the floor, to ensure that you have to support.

Join the head box sections together with rivets, through the connecting bracket and the holes that were previously drilled.

SEMINARIO TECNICO

TENDA FIRE E120 EW30

– INSTALLAZIONE MECCANICA



To ensure the head box is level, check it for the correct height from the floor, confirm this with the drawing

Starting at one end, tighten the fixing bolts

Using two levels or a laser work your way along the head box adjusting the fixing bolts in turn, to ensure it is level in both planes

SEMINARIO TECNICO

TENDA FIRE E120 EW30 – INSTALLAZIONE MECCANICA

Extend the the bearing out as far as it will go.

Lift the roller up and rest the bearing into the tail bearing bracket first. Then sliding the roller

back insert the motor end into the motor bracket.

Insert the fixing clip.

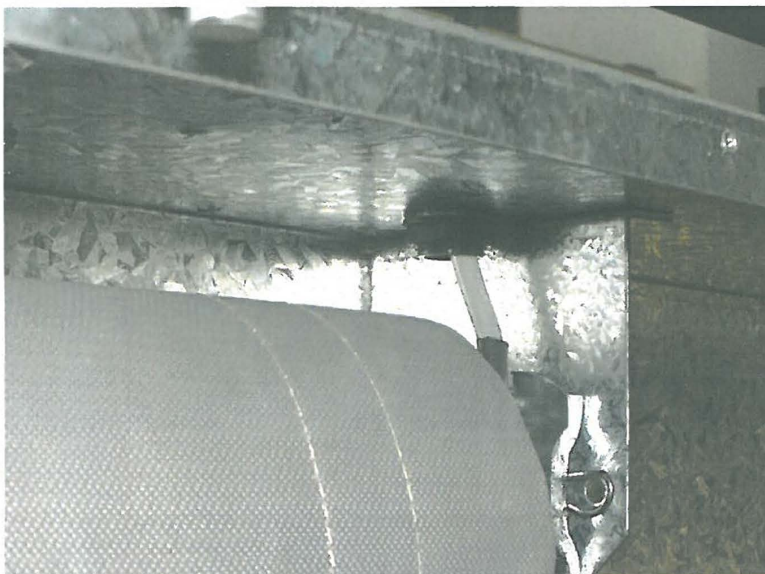
Check it is fixed properly by giving the roller a good shake

Feed the motor cable though a grommet through the 20mm hole in the head box

SEMINARIO TECNICO

TENDA FIRE E120 EW30

– INSTALLAZIONE MECCANICA



Cable through
grommet



Cable neatly held in place with a cable
tie.

Note the motor pin in place, this will
enable access if the roller is to be removed
for maintenance



SEMINARIO TECNICO

TENDA FIRE E120 EW30 – INSTALLAZIONE MECCANICA

Install the second curtain in the way.

Install the front cover plates. Start at one end. Fix in place with self drill tex screws

SEMINARIO TECNICO

TENDA FIRE E120 EW30 – INSTALLAZIONE MECCANICA

Ensure that the front cover plate is square to the end plates. It is imperative to have a fixing screw at the bottom of the front cover plate at the end plate ends

Ensure that there is a fixing screw here

The rest of the front cover plate is fixed at the top only. The joining clips are fitted at each joint.

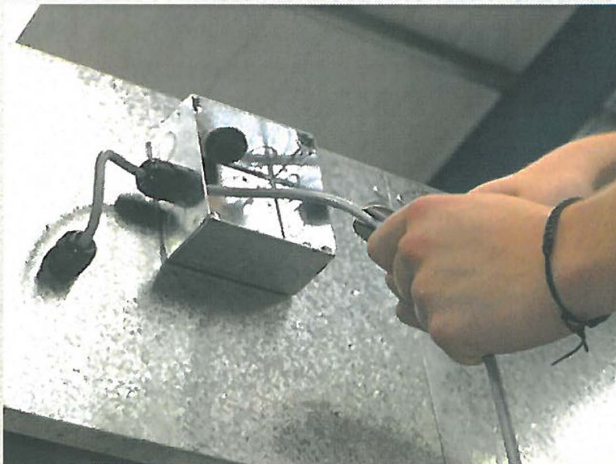


SEMINARIO TECNICO

TENDA FIRE MASTER E120 EW30 – INSTALLAZIONE MECCANICA



The motor cable is 4mts long. Fix a junction box within this length or wire motor directly into Motor Control card.
In this case a Junction box is fitted to the Head box



Terminate the Motor cable using the correct size cable glands

SEMINARIO TECNICO

TENDA FIRE E120 EW30

– INSTALLAZIONE MECCANICA

Ensure that the curtain material is
pulled
tight



The curtain should be wrinkle free
with
The bottom bar level with the chalk
line.